

BroadwayMalyan^{BM}

创造启迪 与活力的 学习空间

教育领域专长

宝麦蓝面向全球建筑、城市规划与设计，专注打造恒久传承的建筑和空间。

我们共享设计精髓，携手打造具有身份感的空间，让人们和社群喜欢在其中生活、学习、购物、工作和休闲。

我们采用合作方式打造可持续发展的一体化设计，令我们在全球范围赢得各种获奖项目。每个项目，从城市战略规划，到栏杆的做工，都能体现出我们对设计质量和空间创造的激情。

我们的全球性让我们有能力灵活组合跨行业团队，为最复杂的项目寻求设计方案；而我们在全球各地的本地存在，又能确保客户服务的人性化和快速响应。

每天，我们才华横溢的设计师们，挥洒他们的创造力、商业才智和行业洞见，打造出各种设计，满足客户的渴望，创造强烈的空间感。

英国考文垂大学



创造
空间
携手共进

灵活 学习空间

Flexible learning spaces



未来的学习环境不能采用一种一成不变的设计方案。由于每一位客户的需求和期望都是不同的，作为设计方，我们的目标是提供一个有创造性、有实践性且注重价值的解决方案，进而创建一个能实现学生能力的平台。

我们认为，设置的学校、学院和大学必须满足现在和将来每个学生的个体的需要和目标。因此，灵活性是一个持续不断追求的目标，确保学习空间始终与动态快速发展的专业领域保持相关性。

灵活的学习空间是确保以学生为中心这一模式的根本。现代教育获得成功的秘诀在于，（为学生）提供了多功能空间和活动场所完美结合的环境，这个环境设计是开放的且与社会密切联系，也是可再分或是蜂窝式的，支持更加私密的个人学习空间。

针对这一宗旨，宝麦蓝已发表了大

量内容，有关相互交错空间的文章。我们设计出多层次空间，有着可移动的墙壁和家居，确保教员创造出满足其课程教学目标的布局。

我们设计家居，并与家居商合作，打造可定制化和多样化的工作站，我们相信，这会成为鼓励学生以自己的方式学习的关键。多样化的学习空间为学生提供了一个缩小工作与社会环境差距的环境。

学习空间已拓展到教室范围之外，走廊已被打破或已成为学习空间的一部分，楼梯拓宽成了露天竞技场，接待空间也已变成了学习大厅。这个结果就是，学生们并不局限于单一房间内，我们鼓励他们去探索，创造出属于他们自己的方法。

我们专注于设计作品的简洁性和适应性，满足在我们设计的建筑物中长期蓬勃发展且不断变化的教育体系。



教育的8种趋势

我们认为，影响未来学校、学院和大学的设计主要有三种思潮：

主动学习：允许有多重教学和学习方法的空间，且空间在不同类型的教学背景下轻松移动变换

社交学习：适合大小不同的团体在令人启发的环境下协同合作的空间

个性化学习：一种人性化场所，帮助学生寻找与同学和老师的联系纽带，促进个性的发展



社交学习

通过互动课程和团体协作，鼓励协作能力和组织技能的发展。教室是设计用来激发用户合作探索、创造和研究的。



就业培训

管理者要求毕业生们准备应对“真实生活”中的挑战，比如他们可能在工作环境中面临的环境。学习空间将逐渐从工作场所设计中获取，并慢慢适应工作场所设计。



个性化学习

可定制化的学习体验和环境，让学生们能够选择自己喜欢的学习空间、工具和过程。课堂空间将逐渐注重实践活动，而不是传统的学习方式，让学生们能作为一个个表达自我的个体。



集成技术

未来的学校将会是一个充满活力环境，将技术与学习体验完美结合在一起。



社区参与

平衡创建一个安全的学习环境也是一个较大型社区广受欢迎且不可分割的有机整体。



健康与生态

开发中关注高质量和非教学设施，例如运动和休闲设施、食品和饮料设施等，是学校与众不同并且增强学生体验的方法之一。很多与学校所在的自然环境保持着良好的自然环境。



品牌表达

为了在竞争激烈的市场中获取成功，各个机构会致力于确保他们的空间能够获取和传达其特定的品牌价值，提高其品牌的受欢迎度。



灵活性与适应性

空间需要在不同时间应对不同的活动和用户。虽然可移动的墙壁和灵活的家居可变换出各种布局，不过学习空间也可提供各种各样的专用区域，可供选择。空间的配置必须能够满足随着长时间变化而变化。

保持人与技术的平衡



Balancing technology with people

由于技术的不断发展变化，用户的心理期望也在跟着变化，导致教育空间的设计也受到很大的影响。教育并不局限在教室内，学生可利用从虚拟助理到庞大的数据集和下一代工具等的各种方式，接触到更多的知识来源。

未来的学校是一个动态的环境，集合了动态交互面板和综合技术，例如虚拟现实和增强现实技术，及学生自我选择和携带到教室使用的工具和设备。尽管网速和电池电量仍然是完全移动环境的一道障碍，但教育环境的设计必须确保设备能够发挥其最大能力。

然而，最终推动设计的并非这些快速发展的技术，而是人。在技术支持教育变革的过程中，学习模式可能会发生改变，但最终我们要聚焦于设计出灵活的空间，推动和支持人与人的互动。

我们关注的重点，是学生之间如何相互交流和相互学习。我们的每一个项目都让我们在这个领域内做到最佳实践，同时继续挑战在教育未来上的传统思维，及通过建筑来表达的方法。



我们的全球 方针原则

Our principles for a **global** approach

不同的地区和市场有着不同的需求。我们全球运作，会将我们在国际专业知识上的优势带给我们的每个项目。我们热爱挑战，注重学习空间的设计，带来优质而与众不同的学习空间。

我们也涉及交叉领域。我们在实践过程中也专注教育多样性，并有能力从各种工作场所、零售、住宅和相邻的建筑中汲取知识。

我们努力将创新性和创造性的设计理念与务实的和以结果为导向的项目管理技能结合起来。我们知道，在所有的市场领域中，金钱才是关键。学习者在很多方面上就是客户，因此达成或超越期望很重要。我们的项目和设计把想象力与约束准则结合起来，确保了结果的正确性。



宝麦蓝设计的学习类建筑始终符合以下基本原则：



对思想的智慧化和求知性的解剖(或帮助记录下来)



建立在健全工作流程上的稳健设计方法



理解地方文化背景



以人为中心的灵活可变的学習环境



一步一个脚印的带来客户的合作流程



符合设定目标的成品

中东12所全新国际一流学校

12 new world-class schools for the Middle East



阿联酋AEDC学校计划 (ADEC Schools Programme)

经过国际设计竞赛后，宝麦蓝受阿布达比教育委员会（ADEC）邀请，开发一个新的学校原型，作为替代阿联酋老旧学校计划的一部分。ADEC设计的这一雄心勃勃的学校设施开发计划包含设计和建造全新世界一流的学校和对现有教育设施的改造。

公司成功交付了12所学校，每一所都采用了相同的设计理念，但与学校现场、学生数量和性别相适应。这些学校采用强烈的教育原则，设计出的方案，覆盖了从幼儿园到六年级所有年龄段的学生。





项目规模
12所学校
600 - 1,200 名学生

灵感来源
中东地区景观和颜色调色

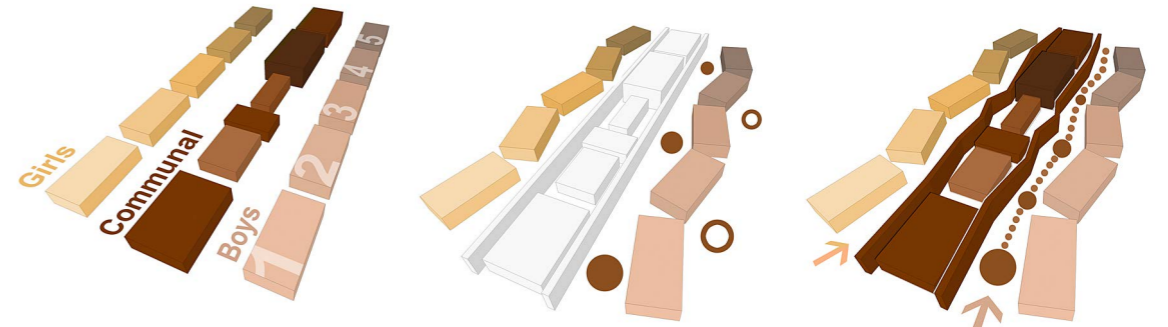
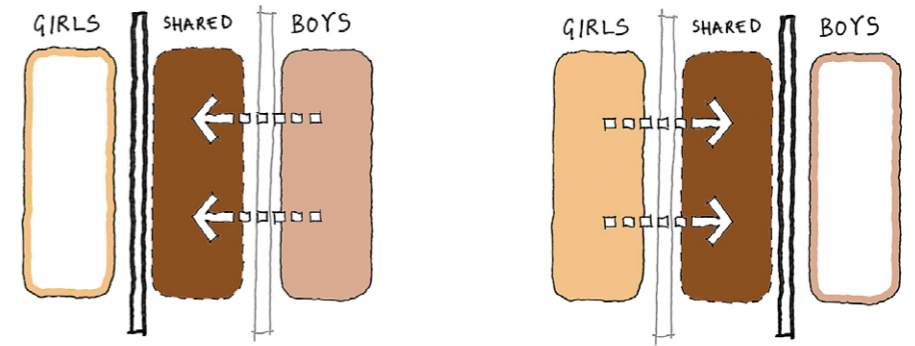
服务
建筑

灵活性

设计团队开始挑战开发农村和城市地区的师范学校。灵活性是关键。

团队设计了一个引人注目的计划，允许扩建和“即插即用”战略，确保设计满足多种条件和环境下使用。该设计很快开发出来并发挥了巨大的潜力，可将可持续发展原则融合到学校设计中。

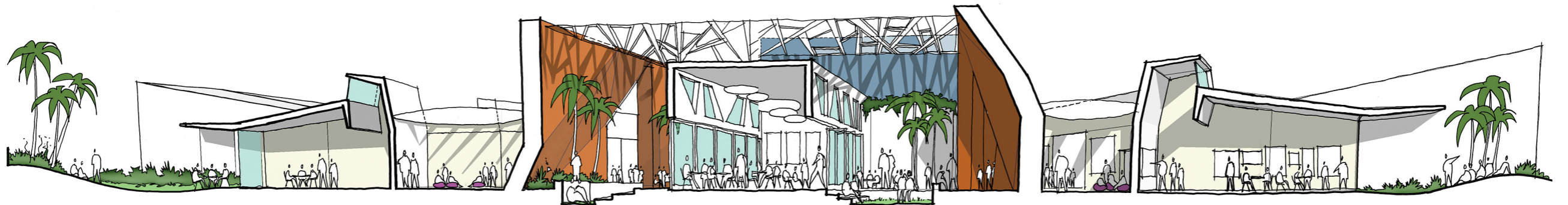
其中心思想是允许新元素的“插入”。这些可根据学校地点和大小进行相应的调整。中间公共空间也可用于单独的男生宿舍和女生宿舍。灵活性一如既往，随班级大小和所有年龄段学生共用空间的不同，提供各种正式/非正式的学习空间，鼓励学生之间进行互动。



模块化的元素被分解成块，按学校现场情况进行定制。

分解空间 内外混合活动空间。

街景 街头风格的布局为学生们创造出一个历程。





可持续发展

保持足够光照强度的同时控制热量的增加是另外一个重要问题，我们采取了一系列解决方案，例如设置天窗和调整建筑物，避免阳光直射。解决这些问题的一个戏剧化的例子是建筑立面采用超大、鲜绿色的垂直百叶窗。

该设计中的一个关键因素是“生态庭院”，这是一个坐落在学校中心的一个灵活空间，覆盖有光伏面板，为俯瞰庭院提供了充足的自然光。庭院中有一个被称为“生态树”的独立建筑，用作室外自然实验室，学生们可在这里了解种植、收货和堆肥，鼓励他们探索植物生长的实际效益和植物的回收利用。



“这个设计非常绝妙，集合了21世纪对最理想学习环境和条件的教育研究。”

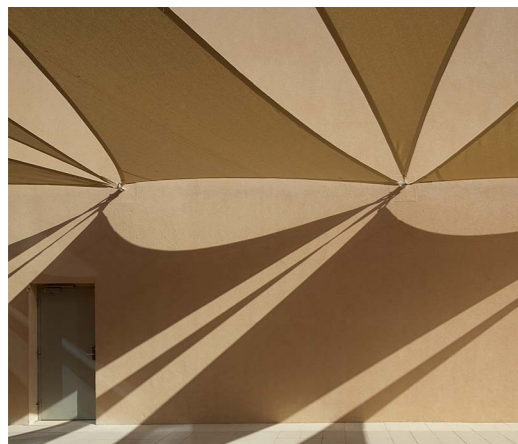
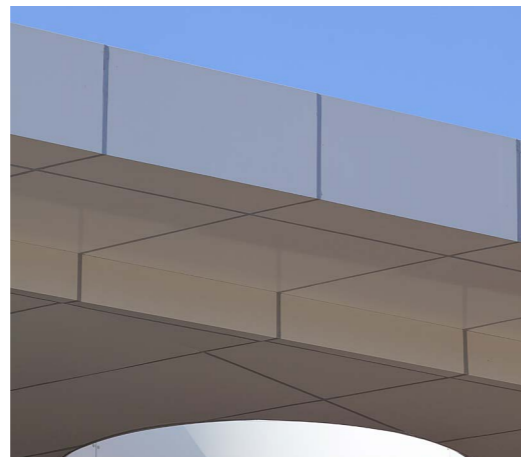
*Mubarak Bin Mohammed School*校长 Sally Rule 女士

从大自然中获得灵感

场地成为了设计开发的重要部分，并影响着室内设计理念和色彩。位置也影响着室外主题墙色彩的选择，这将成为学校最明显的标识。这堵墙的颜色引起设计团队和AEDC方面的激烈讨论。

颜色搭配受周围环境的颜色和材料的影响。颜色研究已完成，以确定所有区域应使用的具体色彩。这项研究影响了应用在学校地板、墙壁和突出区域的可用区域的颜色。





我们的项目

Our projects

22	杭州威雅公学 Wycombe Abbey Hangzhou	49	英国北安普顿创新中心 Northampton Innovation Centre, UK
25	杭州惠灵顿学校改造 Hangzhou Willington School Reformation	50	英国圣约翰迪恩学院 Sir John's Deane College, UK
26	无锡南外国王国际学校 Nanwai Kings Campus, China	52	卡塔尔原型学校计划 Qatar Prototype Schools Programme, Qatar
29	人大附中杭州学校 Future Science and Technology City International Education Campus, China	54	英国伯恩维尔学院 Bournville College, UK
30	苏州工业园区海归人才子女学校 Overseas Chinese Academy Suzhou, China	58	英国Cowley Barracks学生公寓 Cowley Barracks, UK
33	艾斯坦幼儿园 Academy of ASTEM, China	61	英国柯克利斯大学 Kirklees University, UK
34	英国特伦特河畔斯托克第六形式学院 Stoke-on-Trent 6th Form College	62	英国考文垂大学 Coventry University, UK
37	新加坡Nexus国际学校 Nexus International School	64	英国利兹大学档案馆 University of Leeds Archive Building
39	英国利兹大学法学院 University of Leeds Law School, UK	66	中国宁波诺丁汉大学创客中心 UNNC Innovation Incubator, China
42	中国上海德威英国国际学校（浦西） Dulwich College Puxi, China	68	英国拉夫堡大学 Loughborough University, UK
44	西班牙英国文化教育协会学校 British Council School, Spain	70	嘉定华东师范大学附属双语学校 ECNU Affiliated Bilingual School Jiading
47	英国约翰盖伊大楼 The John Guy Building, UK		

建立在两个 不同文化传 承之上的学 校

A school
**founded
upon and the
heritage of
two unique
cultures**

客户
威雅公学

项目规模
63,000m²

灵感
当地文化背景与底蕴

服务
总体规划、建筑设计、景观设计、
室内设计

杭州威雅公学

作为萧山地区独特的标志性建筑和当今二十一世纪的现代化教学机构的范例，学校的设计理念借鉴了英国本土学校和萧山地区当地的文化背景与底蕴。

设计时对尺度的把握将确保学校空间的威严感，从而强化师生安全感并为一对一的教牧关怀理念和全面个性化的教育提供绝佳的场地。

动静结合的建筑形式将为杭州与威雅公学构筑一张独一无二的视觉名片。





现代室内设计为高端教育提供独特学习体验

Contemporary interiors for high-end education scheme to provide a unique learning experience

杭州惠灵顿学校改造

学校室内设计利用英国惠灵顿学院的设计作为灵感的最初来源，创造了以现代优势来反映城市化的方式，致敬19世纪学校的室内风格。

设计以柔和自然的色调为基础，采用暖白色和灰色，榉木和橡木色调。

室内设计包括一个新的主入口大厅，以一个大型中庭创造光和空间感，V&A咖啡厅，以及幼儿园，小学和寄宿学校的门厅和休息区。

在设计中尽量减少墙壁，以帮助视觉连接空间和优化整个建筑的人流动线。



客户
惠灵顿学校

项目规模
1,000m²

灵感
英国惠灵顿学校

服务
室内设计，景观设计

中西融合的 校园环境

Campus
combining
**international
and Chinese
schools**

无锡南外国王国际学校

无锡南外国王国际学校位于太湖新城的中心，校园将四所学校 - 两个国际学校和两个中国学校融合在一个校园中。项目设计旨在创建一个英语校园，由众多红砖建筑形成一系列的庭院和体育设施。每个学校都拥有自己独立的庭院，同时，也享有公共空间和设施，鼓励国际学生和中国学生之间的互动交流。

国际学校和学院惯用的红砖新哥特式建筑的方案。学校提供从幼儿园到13岁年龄段的教学，可接纳960名学生。



客户
狄邦教育

项目规模
75,000m²

灵感
英国国家公园

服务
总体规划、建筑设计、景观设计、
室内设计





一座环境响应型 新型校园建筑

Chinese and
international school in
**harmony with the
environment**

人大附中杭州学校

校园的设计按照当代西方教育学的本质主导，且迎合本地设计规范。校园的设计是国王学院 学校身份的延伸，同时也受到当地环境的启发，创造出独特的适合国际和中国学生以及符合当地社区环境的校园。

这些建筑呈曲线形式，启发于周边山上的茶树梯田，和面向湖水的波浪。

客户

余杭区教育资产运营管理中心

项目规模

117,000m²

灵感

当地地形

服务

总体规划、建筑设计、景观设计、室内设计



未来学校的原型

A prototype for the school of the **future**

苏州工业园区海归人才子女学校

学校作为地区商业和住宅开发的配套项目，其本身融合了艺术、文化、体育、教育多项功能。苏州工业园区海归人才子女学校校园将向当地海归子女学生和 international 学生提供教育服务。学校本身融合了艺术、文化、体育、教育多项功能。项目坐落在历史文化名城苏州工业园区核心区域，位于金鸡湖东侧。地理位置优越，自然环境优美。

学校将提供从幼儿园到 12 年级，包括学生寄宿的全套教育方案。其设计目的是打造现代化21世纪学校，体现苏州工业园区的文化遗产，其国际学校课程蕴含独特的精神气质。

规划布局回应中国传统规划的总平面架构，通过层次性路径连接与公共空间的互相拼接来组织建筑与公共空间布局。场地规划布局至西向东分为三个功能区，各建筑通过连廊全部连接，流线通畅可达，同时规划通过对建筑单体的合理布局，围合出类型丰富、尺度合宜且功能得体的外部公共空间，以适应各年龄段学生室外教学、交流、健身、游戏、静思等活动的需要。

客户
中锐地产

项目规模
40+ schools

灵感
中式传统规划

服务
总体规划、建筑设计、景观设计、室内设计





在博物馆风格的环境中 将艺术，自然和科技融合在一起

**Bringing art,
nature and
technology
together in a
museum style
environment**

艾斯坦幼儿园

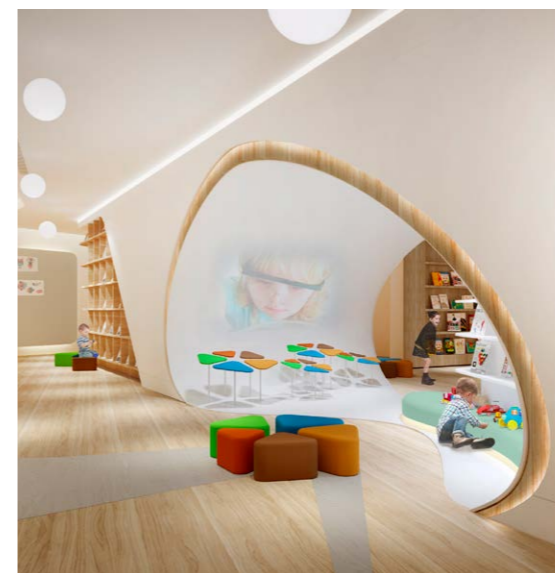
ASTEM项目的设计初衷是为了捕捉博物馆的交互性和惊奇感。

该项目将上海松江区一家私人会员俱乐部进行了翻新。包括四层楼在内，一共十间教室，用于一、二、三年级的教学活动，以及一些类似博物馆画廊的活动区。这些区域以各种方式为主题，包括一个天文台、时间隧道、花园区、城市广场、海滩、电影院和水族馆，还利用了现有的室内游泳池。

中国的重要发明也启发了四个空间：纸张、印刷机、火药和指南针。

其他设施包括托儿所、图书馆和实验室。顶层设有办公室、会议空间和教员休息室。

一个双层高的大厅欢迎游客和学生到学校，一个螺旋形楼梯形成了主要的中心。



客户
旭辉集团

项目规模
334,450m²

灵感
博物馆画廊

服务
室内设计，空间布局规划

获奖 全新 预科学院校 园

Award winning new sixth form college campus

项目规模
10,000m²

灵感
自然景观

服务
建筑、室内设计 城市规划风景园林

奖项
在北斯塔福德郡城市愿景 (North
Staffordshire Urban Vision) 中获得

年度最佳建筑 (Building of the Year)

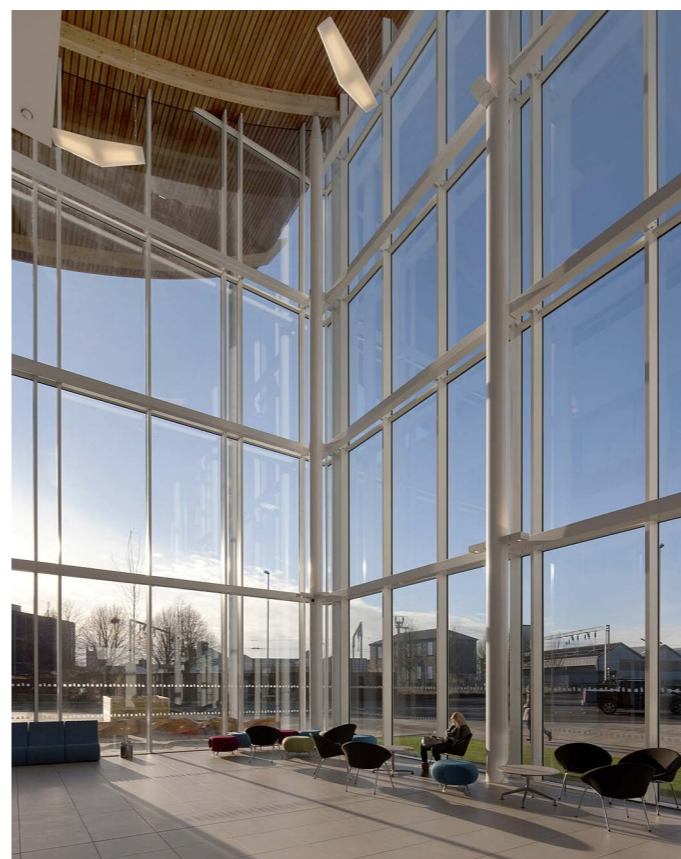
建筑与城市设计奖 (Architecture and
Urban Design Awards)

英国特伦特河畔斯托克
预科学院 (Stoke-on-
Trent 6th Form College)

作为特伦特河畔斯托克新大学学
区的一部分，获奖的预科学院
提供了一个充满活力的学习环
境，捕捉到了学生们和工作人
员的想象力，促进了互动学习。

该学院是通过大学区的门户，位于
特伦特河畔斯托克火车站旁边，
交通便利，这座楼就在这两条高
楼林立的“街道”旁，街道穿
过这过楼。这些链接内外的交通
便利创造出各种环境，方便了学
生们独立学习的需求，并建立起
一个综合学习社区的共同愿景。

这条相对更加社会化的大街上悬挂着
水晶学习小屋。小屋色彩明亮，包
含各种创新性学习场所，例如图书
屋和舞厅，创造出一个戏剧性而又
有趣的内部空间。其设计特色有立
竹篱笆墙，作为建筑的外部景观，
为小中庭提供了一个宁静而又祥和
的氛围。



配备先进教学设施

A landmark international school offering **state-of-the-art teaching facilities**

客户
泰莱教育集团 (Taylor's Education Group)

项目规模
60,600m²
2,000名学生

灵感
参考车流移动的一个“垂直校园”

服务
规划、建筑、园林规划、室内设计

“我们相信Nexus以学生为中心的教育事实。 我们有经验丰富的员工,可为每个学生个性化和定制化的设计课程,确保达到他们特定的学习要求。以这种合作与互动的方式教学需要一个能表现出这种方式的独特空间。”

泰勒学校 (Taylor's Schools) 校长 BK Gan

新加坡Nexus国际学校 (Nexus International School)

宝麦蓝赢得了为亚洲最大的教育机构在新加坡市中心设计标志性国际学校的委托合同。 毅马国际学校 (NEXUS International School) 校园是毅马 (Nexus) 品牌的旗舰学校,旨在为以后的学校提供样板。

校园内的设施有一个50m室内泳池、一座运动场、一间录音室、一座图书馆、一座礼堂、两座体育馆和一系列灵活的学习空间。 校园的中间是创新中心 (Innovation Hub), 这是一个展示新教学理念的展示空间。

作为一所“苹果卓越学校” (Apple Distinguished School), 科技是课程交付不可或缺的一部分,是学校基础设施设计与最新科技集成的主要推动力。

采用科技打造了“无水无污染无能耗”设计理念的一系列举措,例如学习环境的余热加热泳池、阳光传感器控制的职能遮阳棚和雨水管理系统,改善当地气候条件。





一座环境相应型 新型校园建筑

An **environmentally responsive** new faculty building

英国利兹大学法学院

利兹大学法学院的自由大厦(Liberty Building)是一座最先进的工作和学习建筑。法学院曾经的宿舍分散而老旧,而现在,却拥有一个多个明朗空间构成、充满凝聚力的环境,学生和研究人员可相互互动、合作,徜徉在这美妙环境下。

这里设计了许多不同的空间,有北面相对封闭的教学环境,也有南部透明的开放空间。在一楼,本科学生的公共休息室占据着朝外的空间,学生和教职工都可使用。



奖项
利兹大学

项目规模
6,300m²

灵感
与室外区域链接的透明性

服务
总体规划、建筑、园林规划



河畔校区 (Waterside campus)总 体规划打造 全新的国际 性学校

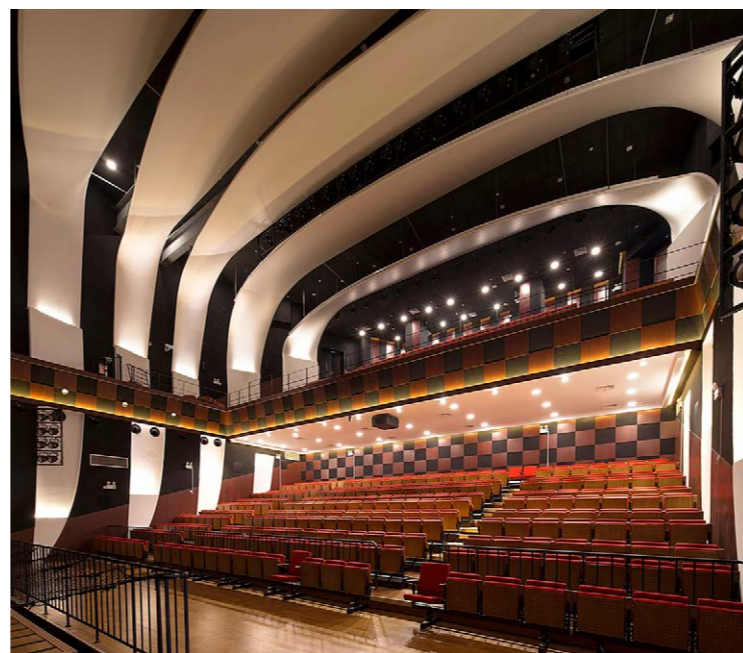
Waterside campus masterplan for a new international school

中国德威英国国际学校
(浦西) (Dulwich College
Puxi)

这所坐落在上海闵行区的德威英国国际学校新校园为幼小班和初高中提供现代化的教学和学习环境，拥有一座560座的专业剧场和一座包含50m泳池的室内体育场。

这一设计理念是伦敦德威学校 (Dulwich College) 校区的现代化诠释。因此，该方案包含了诸如钟楼和适当比例的红砖等元素，这也是契合了19世纪末和20世纪初英国学校和大学设计。一座中国传统桥梁架设在河流上，学生和游客可穿过河流来到风景如画的广场上，广场边有一个由回收瓷砖砌成的大型特色窗户，可俯瞰整个广场，这些砖块又一次见证了学校的原汁原味。

总体规划是，建筑围绕着一个大型的方形庭院而建，上面设置一个多用途运动场和一个板球场。



奖项
德威教育管理有限公司
(Dulwich College Management)

项目规模
39,191m²

灵感
19世纪英国学校

服务
建筑、总体规划、园林规划、
室内设计

高级别学校的整修和扩建

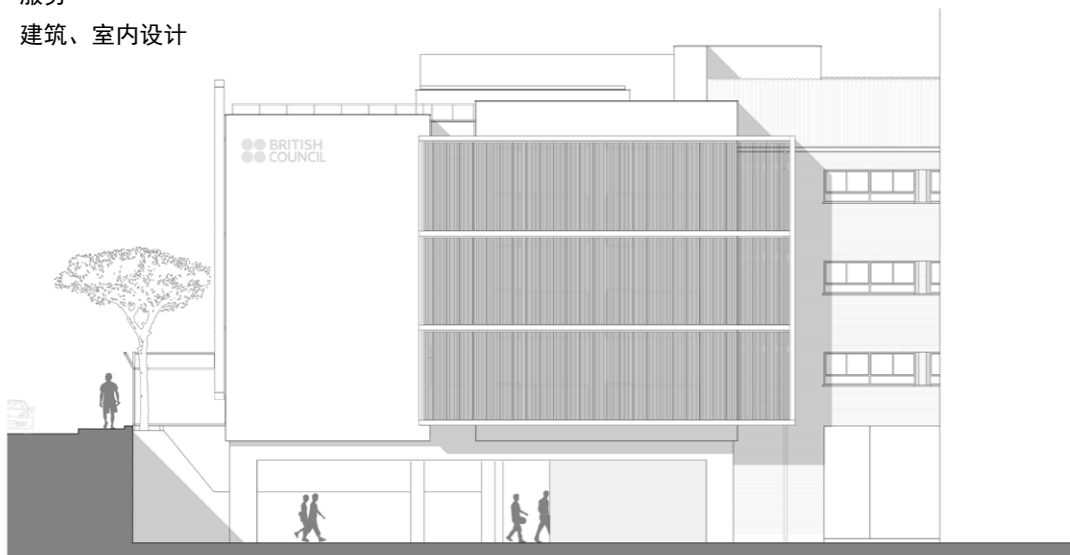
Refurbishment and extension to a **high profile school**

奖项
英国文化教育协会 (The British Council)

项目规模
1,250m²

灵感
可持续发展

服务
建筑、室内设计



西班牙英国文化教育协会学校

位于西班牙马德里的著名英国文化教育协会学校 (British Council School) 的大型扩建、改造和整修的成果是创建了一所新的初级中学，包含12间灵活的教室、科学教室、艺术工作室和戏剧讲习班。

同时还设置了新的资源区和地下运动区，可供2000名三到八岁的儿童参加。行政楼和图书馆已翻新，再加上一条通往初中的通道入口。

设计团队还运用了热容器、遮阳设备和太阳能采集设备，确保教学环境全年的成本达到最优化。





全新可持续化的 教学楼提供 专业的教学环境

New sustainable
faculty building
providing **specialist
teaching
accommodation**

英国约翰盖伊大楼 (The John Guy Building)

在设计竞赛后，宝麦蓝受法恩伯勒 (Farnborough) 预科学院 (Sixth Form College, Farnborough) 委托，在现有校园中间设计一座“可持续且标志性的”教学楼。新教学楼将囊括物理、电子、计算、综合教学、摄影、艺术和设计等专业。

教学楼的中央是一个为学生们提供团体协作和班级间社交的场所。一个宽阔的中央开放场所设计用来为所有人提供一个场所，促进开放式学习、展览和思想的传播。

通过对采光、通风和现有设施及用户的研究，开发出建筑布局，创造了灵活而激励人心的教学场所。根据英国建筑研究所 (BRE) 的绿色建筑指南 (Green Guide)，采用可持续性材料打造的简易调色板被选来组成外部白箱。



奖项
法恩伯勒预科学院
(Sixth Form College Farnborough)

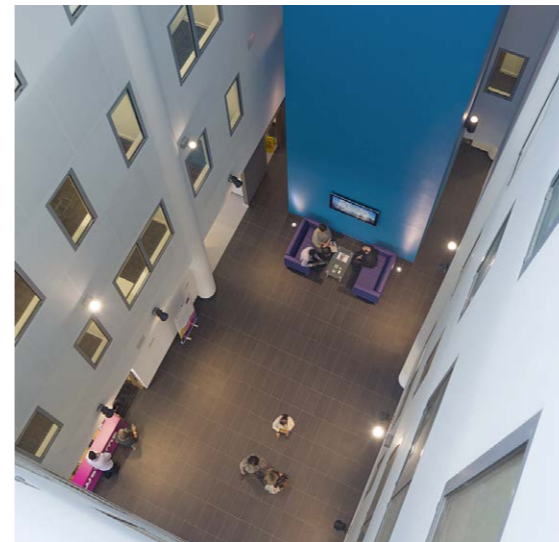
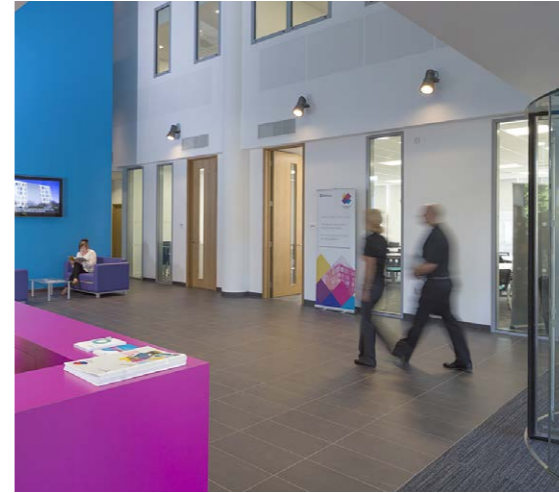
项目规模
3,050m²

灵感
以思想传播为核心

服务
建筑、园林规划、室内设计

创业企业孵化中心

An incubation centre for **start up businesses**



英国北安普顿创新中心 (Northampton Innovation Centre)

北安普顿创新中心 (Northampton Innovation Centre) 位于诺丁顿火车站附近的咽喉要地，是北安普顿水滨产业园区 (Northampton Waterside Enterprise Zone) 的第一座建筑。因此，创造出一座链接新产业区和车站之间的高辨识度地标建筑，并为后续开发奠定了开发标准，这一点非常重要。

该建筑是一座采用北安普顿铁矿石和陶瓦完美砌合的简单四层立方体结构建筑。作为一栋多租户办公楼，它包含42个灵活办公单位，重点扶持以大学研究和开发成果转化的社会企业和公司。在建筑内部，办公室围绕着中庭而建，鼓励租户间交流互动。

一楼是一个公共咖啡馆和朝向大街的活动展示区，为这座小镇带来新生。

奖项
西北安普敦开发公司
(West Northampton Development)

项目规模
3,737m²

灵感
简单常见的空间，鼓励交流互动

服务
总体规划、建筑

大学校园的完全重建

Complete redevelopment of a college campus

英国圣约翰迪恩学院 (Sir John's Deane College)

圣约翰迪恩学院(Sir John's Deane College)占据柴郡(Cheshire)诺斯威奇(Northwich)镇中心边缘的大片区域,是一座极其成功且受欢迎的灵感学院。当前校园建筑层次不齐,包括20世纪初的文法学院、80年代的教学楼和一些半永久性的流动教室。

宝麦蓝在经过有限设计大赛后,获得授权,其首要任务是对这些建筑进行合理化评估,拆除一些老旧建筑,引入一些新的教学设施。该任务随后被地区LSC扩大到整个项目现场的完全重建,以提供21世纪可持续化教学楼。

该项目在详细设计阶段降低了15%的标准二氧化碳排放,且受到英国建筑研究院绿色建筑评估体系(BREEAM)

“非常优秀”(very good)的表彰。

奖项
圣约翰迪恩学院(Sir John's Deane College)

项目规模
10,000m²

灵感
一座可持续发展的大学校区

服务
建筑



未来学校的原型

A prototype for the school of the **future**

卡塔尔原型学校计划 (Qatar Prototype Schools Programme)

为满足“卡塔尔2030年国家愿景” (Qatar National Vision 2030)，最高教育委员会 (Supreme Education Council) 和公共工程局 (Public Works Authority) 授权宝麦蓝设计和开发下一代的幼儿园和小学。该设计将成为卡塔尔未来的学校设计标准。

现已在多哈和其他城市确定了四十多个地点，且原型正在开发中，容纳了足够的灵活性，满足小学、预备学校和中学的设计选择。这些地点的建设只需短短的五年时间。

所有的地点都配备专门的地下停车场、高质量的学术设施、世界一流的体育设施，及功能和学习环境的一系列大幅变化。该项目将满足世界级教育体系的开发，让卡塔尔公民实现自己的愿望，满足卡塔尔不断增长的社会需求。

奖项

卡塔尔公共工程署 (Ashghal)

项目规模

40+ schools

灵感

贝壳与鱼篮

服务

建筑、园林规划



新建继续教育 学院校园

New-build
further education
college campus

奖项

英国伯恩维尔学院
(Bournville College)

项目规模

23,600m²

灵感

下一代教育空间

服务

建筑、园林规划、室内设计

英国伯恩维尔学院 (Bournville College)

自朗布里奇 (Longbridge) 汽车厂关闭近一个世纪后，其场地日益成为伯明翰西南地区亟待重建之地。

伯恩维尔学院 (Bournville College) 授权宝麦蓝特殊教育团队，为在该地区新建一座新的校园进行总体规划，有利于推动朗布里奇中心区域 (“a new heart for Longbridge”) 新广场地区的继续教育、高等教育和职业教育发展。我们与总体规划化方、伯恩维尔学院和伯明翰市政厅密切合作，确保该建筑达到其最大的期望值，作为学院乃至证所城市的一座突出的标注性建筑。学院方要求建筑影视一座21世纪的新型建筑，提现了灵活性和高适应性的教学空间，全建筑提供无线连接。





“宝麦蓝为我们设计了一座
梦幻般的校园……这将会
是欧洲最现代的教育设施，
会让该地区长期受益。”
——伯恩维尔学院

(Bournville College)校长 Norman Cave

奖项

2012年结构工程师协会奖 (Institute of Structural Engineer's Awards) 的年度教育类建筑奖

(Education Building of the Year) 2012年皇家特许测量师学会 (RICS) 西米德兰兹奖的设计、创新与重建奖(入围)，2012年RIBA 西米德兰兹奖 (入围)、

2012年圣戈班石膏国际奖杯奖 (Saint-Gobain Gypsum International Trophy Awards) 中的具体行业奖项

2012年伯明翰市政厅建筑质量奖(Birmingham City Council Built in Quality Awards)中的教育类奖项

牛津最大的 学生公寓

Oxford's largest student village

奖项

Unite Students

项目规模

885 beds

灵感

项目现场的当地特色和军事历史

服务

建筑、总体规划

英国Cowley Barracks学生公寓

宝麦蓝受托在牛津前军营旧址上建造一座新的学生住宿区。牛津布鲁克斯大学 (Oxford Brooks University) 学生宿舍是全市最大的单一学生开发项目，将由Unite Students运营。

该开发项目除了有近900个学生床位外，围绕着两座庭院和中心街道，还有各种协作空间、商店、洗衣店和咖啡馆。该项目包含许多个建筑，组成方形院落的形式，其建筑围墙的样式常见于许多牛津剑桥的中世纪大学和当地的军事历史建筑中。

各种三层楼群围绕着现场周围，红砖而建，体现着本地的特色，而方形院落则由四五层楼群构成，黄砖砌成，连接着项目现场旁边的遗留军营建筑。

“遗留”的建筑再次体现了前军用设施的意味，在建筑现场的一角突出了显著的地标特色。这座建筑是用石头和水平条木铺设而成，屋顶的平台则有着牛津著名的尖顶式风景，一览无遗。



一座引人注目 的新校园 刺激 经济增长

A striking new campus
stimulating growth

奖项
英国柯克利斯大学

项目规模
28,380m² GLA

灵感
三个截然不同的标志性街区

服务
建筑、总体规划

“这座新校园中心将为
社区提供一个优秀的新
资源环境。”

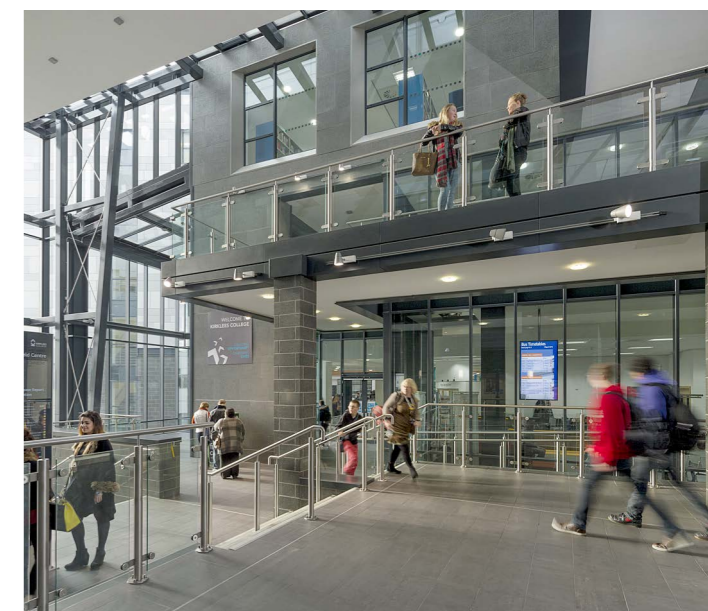
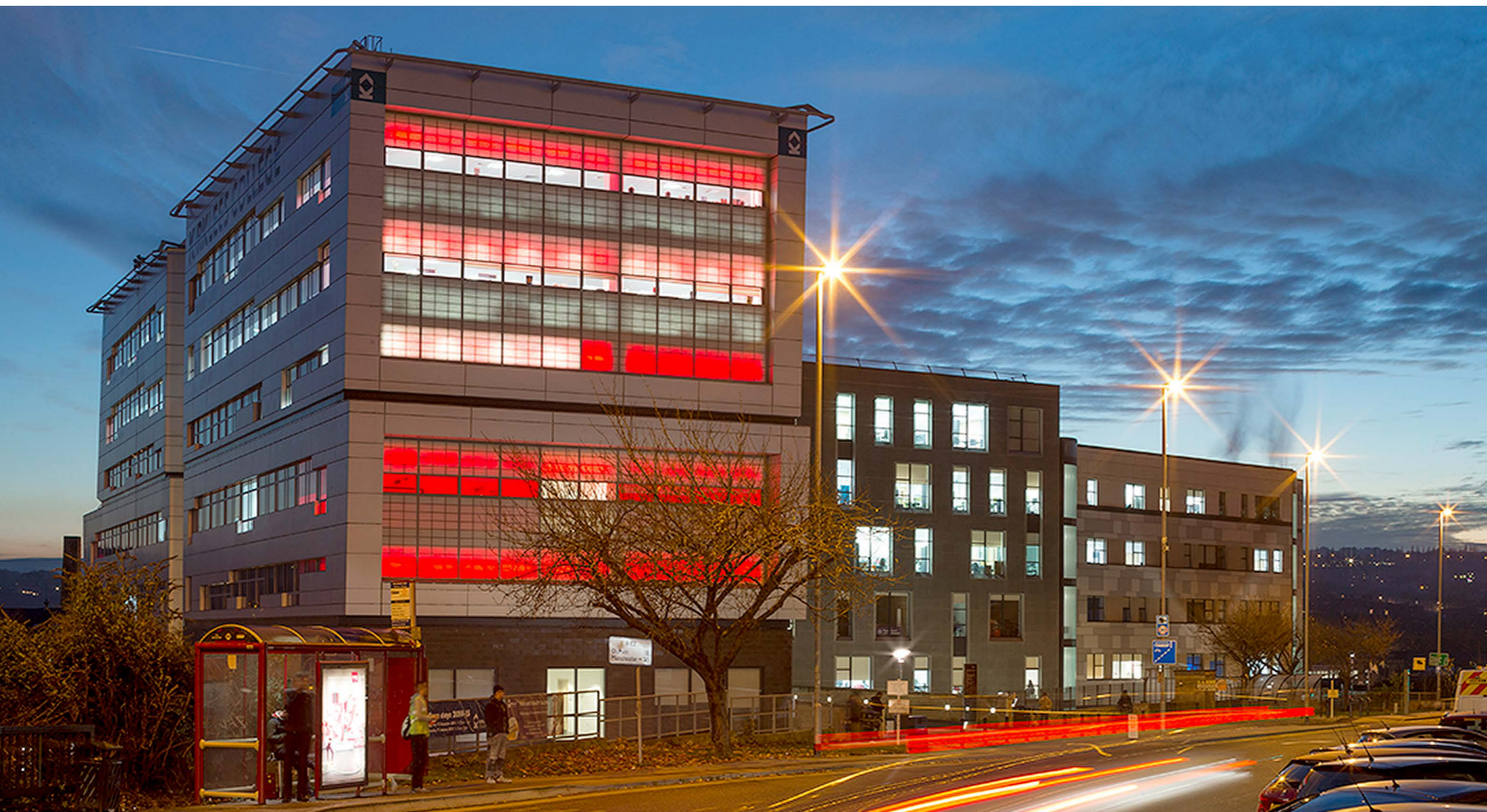
(Kirklees University) 校
长Chris Sadler

英国柯克利斯大学

耗资7400万欧元的柯克利斯大学
(Kirklees University) 校园为哈德斯菲尔
德 (Huddersfield) 数千名学生提供了一个
富有创意的学习环境。这个雄心勃勃的
项目规划提供了九层教室和作坊、一间
健身房、一个餐厅、一座美发美容沙龙、
一台飞机座舱模拟器和学生服务中心。

新校园将所有与以往不同的宿舍环境集
中到这一个三座相互连接的建筑中心。

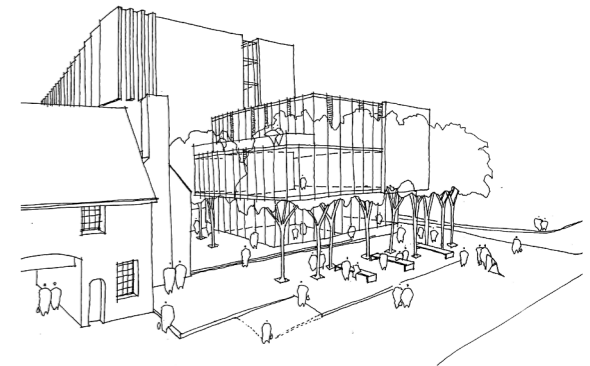
学院校园通过横穿学院中心的步行街，
将滨水区 (Waterfront Quarter) 与城镇中
心连接在一起，刺激着城镇的复兴。





考文垂大学(Conventry University)世界一流的教学设施

World-class
facilities for
Conventry
University



英国考文垂大学

考文垂大学 (Conventry University) 委托宝麦蓝为其健康与生命科学学院开发和交付一座最先进建筑设施，该设施须引人注目，并围绕着新主楼而建。

该设施按照其用户的需求“由内而外”设计，让协作空间最大化。

该建筑位于城市中心的南部，作为考文垂大学雄心壮志和远大抱负的标志，是大学现代化地标性建筑。

建筑立面的处理体现了单一整体设计下的环境背景色彩。材料的颜色保持最小对比度，南北立面的手工砖与露出的混凝土，及氧化处理的深灰色窗框和百叶窗形成强烈的对比。

奖项
考文垂大学

项目规模
11,500m²

灵感
协作空间与灵活性

服务
建筑、室内设计



按照最高环境标准设计的档案馆

Archive building designed to the highest **environmental standards**

“学生们对于学校的要求越来越敏感，他们希望有世界一流的教学、研究设施和图书馆。”

宝麦蓝总裁 *Neil Rose*

英国利兹大学档案馆 (University of Leeds Archive Building)

宝麦蓝将利兹大学与马莎的要求结合在一起，设计出一座与众不同的功能性档案馆，显示出最高设计质量。

除了永久性展览空间外，还为珍贵的图书和杂志提供了18,500 m²的可移动货架，另为历史照片、电影、独特的纺织品和历史文件提供一个可控可调的“保险库”。会议室、阅览室和办公室也极具特色。

设计屡获奖项，证实了在材料选择上的创新，该设计具有强烈的创新理念，建筑的外观形似一本书打开的书页。

项目规模
2,600m²

服务
书页

灵感
建筑、园林规划

奖项
2012绿苹果奖 (Green Apple Awards 2012) 中的建筑环境与建筑遗产奖 (Built Environment and Architectural Heritage) 银牌得主、
入围2012年皇家注册勘察师协会奖约克郡赛区设计与创新奖 (RICS Pro-Yorkshire Awards 2012)



将最佳工作场所与教育设计结合起来

Combining the best of workplace and education design

中国宁波诺丁汉国际创新创业孵化产业园

宁波诺丁汉国际创新创业孵化产业园 (UNNC Innovation Incubator) 为中国同类基础设施树立了新标杆，为校园提供了一笔宝贵的财务。该设计注重灵活性和协作空间，是可用于研究、商业和技术的高规格空间。

新大楼还将包含居住/工作空间及辅助用途，例如餐厅、咖啡厅、酒吧、健身房、屋顶花园和社交场所。

项目现场位于主路和运河之间。该建筑简洁大气的设计尊重了原有地标的曲线，大型的公共区域将建筑与更广阔的区域结合到了一起，聚集了人气。

该项目是中国宁波诺丁汉大学2020年校园发展战略远景规划的一部分。

奖项
中国宁波诺丁汉大学

项目规模
15,000m²

灵感
现代办公室与居住场所的融合

服务
建筑、室内设计、园林规划

“宁波诺丁汉国际创新创业孵化产业园 (UNNC Innovation Incubator) 为中国同类基础设施树立了新标杆。”

宝麦蓝总裁 *Harry Hoodless, Director*, 表示





最前沿的 运动医学与研究设施

Cutting-edge sports medicine and research facilities

奖项
拉夫堡大学

英国拉夫堡大学

项目规模
6,194m²

宝麦蓝受英国拉夫堡大学 (Loughborough University) 委托，为一座新建筑提供建筑服务，该建筑包含体育运动医学中心 (The National Centre for Sport and Exercise Medicine, NCSEM) 和健康运动与生物科学学院 (HEBS) 的第二教学楼。该项目属于伦敦奥运会建筑之一。

灵感
专业人员的互动中心

该建筑为运动医学和研究提供主要设施，并为运动损伤患者提供医疗服务。其设计用来促进专业临床医生和学术研究人员之间的互动和交流，目的是将研究转化为实践，推动健康的生活方式。

服务
建筑设计

NCSEM由创新性步态实验室/生物力学分析区构成，运动相机和智能计算机程序会对关系人/患者进行评估。除建筑物本身外，2012年奥运会斯特拉特福德 (Stratford) 现场还提供全套的诊断设备。



该建筑是设计用来观察附近运动场，包含了朝向公共场所的主入口柱廊。该建筑获得了建筑研究所环境评估法 (BREEAM) 的优秀评定。

一座采用了国际标准的中国传统学校

A traditional Chinese school with international standards

嘉定华东师范大学附属双语学校

宝麦蓝受托在上海嘉定安亭镇设计一所新的私立学校。该学校采用国际标准的硬件设施，提供中国教育课程。由于项目所在地建筑密集，受地块密度限制较大，宝麦蓝的解决方案是提供集约式的工作场所和协作空间。学校采取了一系列细长流线型的建筑设计，创造出一种动态的视觉感受，与项目所在地的汽车城相适应。

该方案设计有一座650个床位的公寓和一座680座的礼堂，为1-5年级小学阶段和6-9年级初高中阶段的学生提供了绝佳的社交和学习环境。运动场馆内有一个25m的泳池和2球场篮球馆及舞蹈和健身空间。

奖项

上海国际汽车城集团有限公司

项目规模

43,400m²

灵感

车流移动

服务

总体规划、建筑、
园林规划、室内设计



English Translation

Page 2-3

Flexible learning spaces



There is not a “one-size fits all” design solution for future learning environments. Every client has varying requirements and aspirations and it is our role as designers to provide creative, effective and value-focused solutions that provide a platform for personal achievement.

We believe schools, colleges and universities must be designed to cater for the individual needs and goals of every student both today and in the future. As such, flexibility is a consistent objective to ensure that spaces remain relevant in what is a dynamic and fast moving sector.

Flexible spaces are essential to enable a student-centred model. Providing the right mixture of multi-functional spaces and activity areas, designed to be open and socially focused with subdividable or cellular configurations which support more intimate personal learning, is key to the success of modern education environments.

Broadway Malyan has authored a multitude of spatial approaches that complement each other for this purpose. We have designed multi-tiered spaces, with moveable walls and furniture, which enable educators to create layouts that support the learning goals of a curriculum.

We design furniture and partner with furniture providers to deliver

customisable and versatile workstations, which we believe are pivotal in encouraging students to study in their own way. Diversified study spaces will give students a choice of environment, which bridge the gap between work and social space.

Learning spaces have expanded beyond the classroom areas, with corridors becoming breakout or the class space itself, staircases widened to become amphitheatres, and reception spaces as study lounges. The result is that students are not restricted to a single room, but encouraged to explore and make their own way.

We focus on delivering an adaptable simplicity in our design work that will permit continually changing education systems to flourish in our buildings for the long term.

Page 4-5

8 trends in education

We believe that there are three core ideas influencing the design of the schools, colleges and universities of the future:

Active learning: spaces which allow various approaches to teaching and learning and facilitate easy movement between different types of settings

Social learning: spaces focused on collaborative working, catering for a range of group sizes in inspirational places

Personalised learning: human scale places that help students to feel connected to their peers and teachers, and yet promote individuality

Social Learning: The development of collaborative and organisational skills is encouraged through interactive lessons and group work. Classrooms are designed to stimulate users to explore, create and research cooperatively.

Training for employment: Managers require graduates prepared to respond to “real-life” challenges, like the ones they would face in a work environment. Learning spaces will increasingly take from and adapt workplace designs.

Personalised training: Customisable learning experiences and environments, enabling students to choose their preferred learning spaces, tools and processes. Classroom spaces will become focused on practical activities rather than traditional study to allow students to express themselves as individuals.

Integrated technology: The school of the future will be a dynamic environment, with technology seamlessly integrated into the learning experience.

Community engagement: Balancing the creation of a secure learning environment that is also a welcoming, integrated part of the wider community.

Health and Ecology: A focus on high quality, non-teaching facilities within developments such as sport and leisure facilities and food and beverage options, as examples of ways that schools can distinguish their offer and enhance the student experience. Many will focus on strong relationships with their natural context.

Brand expressions: To succeed in a competitive market, institutions will focus on ensuring that their spaces capture and communicate their specific brand values and increase the desirability of their offer.

Flexibility and Adaptability: Spaces need to address different activities and users over time. While movable walls and flexible furniture will allow for a range of possible layouts, learning spaces will also feature a wide assortment of dedicated areas to choose from. Spaces must be configured to allow for change over the long term also.

Page 6-7

Balancing technology with people



Shifts in user expectations, due to changes in technology, are heavily influencing the design of education spaces. Learning is not confined to the classroom; students can tap into additional sources of knowledge, from virtual assistants, to huge datasets and next-generation tools.

The school of the future is a dynamic environment, featuring interactive surfaces, integrated technologies such as virtual and augmented reality, and an increase in students choosing and bringing their own tools and devices into the classroom. The design of the learning environment must ensure that the equipment can be used at its maximum potential, although network speeds and power sources remain a barrier to aspirations of a completely mobile environment.

However, these rapid technological advances are not the ultimate driving force behind designs – it is people. Learning patterns may shift as technology supports pedagogic change but ultimately we must focus on designing flexible spaces that promote and support human interaction.

Our focus is on how students interact and learn from each other. Each of our projects allows us to implement best practice within the sector while continuing to challenge orthodox thinking about the future of education and how that can be interpreted through architecture.

Page 8-9

Our principles for a global approach



In different geographies and markets, there will be different expectations. We work globally and bring the benefit of that international expertise to each and every one of our projects. At Broadway Malyan, we embrace that challenge and focus on designing learning spaces of quality and distinction.

We also work in complementary sectors. We have a specialism in education matched by diversity across our practice and the ability to draw on knowledge from workplace, retail, residential and adjacent building typologies.

We strive to combine innovative and creative design thinking with pragmatic and delivery-focused project management skills. We know that, for all sub-sectors of the market, value for money is critical. Learners are, in more ways than one, customers, and meeting or exceeding expectations is important. Our projects and designs bring together imagination with discipline to assure the right result.

A Broadway Malyan designed building for learning will always be shaped by a set of fundamental principles:

An intelligent and inquisitive dissection of your brief (or even helping to write it)

A robust design methodology based on sound working processes

An understanding of local and cultural contexts

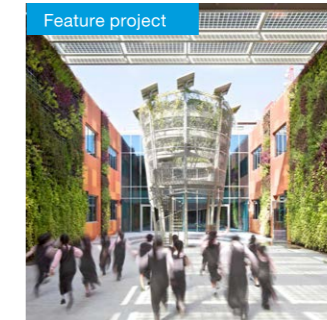
A flexible and adaptable learning environment focused on people

A collaborative process that brings our clients with us, every step of the way

An end product that fulfils what it set out to achieve

Page 10-11

12 new world-class schools for the Middle East



Page 12-13

ADEC Schools Programme, UAE

Suzhou is a UNESCO World Heritage City and one of China’s top tourist destinations. The client’s aim was to develop a fashion focused shopping centre aimed at young consumers, with a modern, urban feel, reflective of international standard malls. Our challenge was to design something appropriate for this vision that would also draw on the local culture without resorting to pastiche.

Our aspiration was to combine the two elements, the historic and contemporary, to create a memorable space that would deliver new experiences for shoppers and encourage repeat visits.

Project Scale
12 Schools
600 – 1,200 pupils

Inspiration
The Middle Eastern landscape and colour palette

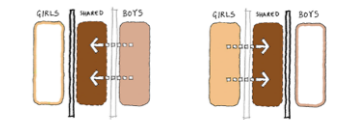
Services
Architecture

Flexibility

The design team began the challenge of developing a model school for both an urban and rural site. Flexibility was key.

A striking plan was created which allowed for the simple expansion and ‘plug and play’ strategy that would ensure the design was suitable for a number of conditions and orientations. This design soon developed and offered great potential to integrate sustainable principles within the school design.

A central spine was developed which allows for the “plugging in” of new elements. These can be changed depending on location and size. The central communal space was also used to separate boys and girls. Flexibility continues with the interiors, which offer varying formal/informal learning spaces for different class sizes as well as shared spaces used by all age-groups, encouraging student interaction.



Modularity Elements are broken down into blocks that can be tailored to the site.

Breakout spaces Mixture of inside and outside spaces for activity.

Streetscape Street style layouts create a journey for the students.

Page 12-13

Inspired by Nature



The site context soon became an important part of the design development and influenced the interior design concept and colours. The locations also inspired the choice of colours for the external feature wall which would become the most evident item of identity for the school. The colour of this wall generated great debate between the design team and ADEC themselves.

The colour palette has been influenced by colours and materials within the surroundings. A colour study was completed to ascertain the exact colours found in all the various sites. This research informed the colour palette that has been applied where possible to floor, walls and highlight areas within the schools.

Page 12-13

Sustainability



Controlling heat gain while maintaining sufficient levels of daylight was another major concern and a variety of solutions were utilised such as skylights and alignment of buildings to avoid direct exposure to the sun. An example of the dramatic expression of these issues are the large, bright green, vertical louvers that face several elevations in one of our concepts.

A key element in the design was the 'Eco Courtyard', a flexible space at the heart of the school partially covered in PV panels which offers natural light to the spaces overlooking the court. A stand-alone installation in the courtyard known as the 'Eco-Tree' is used as an external elevated science lab where students can learn about planting, harvesting and composting encouraging them to explore the practical benefits of growing plants and recycle them.

"The design is brilliant and encapsulates 21st century educational research around optimal environments and conditions for learning."

Ms Sally Rule, Principal, Mubarak Bin Mohammed School

Page 18-19

Our projects

22 Wycombe Abbey Hangzhou, China

- 24 Hangzhou Willington School Reformation, China
- 26 Nanwai Kings Campus, China
- 28 Future Science and Technology City International Education Campus, China
- 30 Suzhou Returness Children, China
- 33 Academy of ASTEM, China
- 34 Stoke-on-Trent 6th Form College, UK
- 37 Nexus International School, Singapore
- 39 University of Leeds Law School, UK
- 42 Dulwich College Puxi, China
- 44 British Council School, Spain
- 47 The John Guy Building, UK
- 49 Northampton Innovation Centre, UK
- 50 Sir John's Deane College, UK
- 52 Qatar Prototype Schools Programme, UAE
- 54 Bournville College, UK
- 54 Cowley Barracks Student Village, UK
- 58 Kirklees University, UK
- 62 Coventry University, UK
- 64 University of Leeds Archive Building, UK
- 66 Nottingham Ningbo University, China
- 68 Loughborough University, UK
- 70 Jiading School, China

Page 22

Wycombe Abbey Hangzhou, China



As an icon unique to the district of Xiao Shan and an exemplar 21st Century learning facility, the campus draws on the heritage of both the British school and Xiao Shan's context to define its character.

As sense of scale will be considered to ensure there is an intimacy in the

places created, to help foster the feeling of security and provide zones for one on one pastoral care and holistic personalized learning.

Complementary dynamic forms and robust building blocks will be used to generate a unique visual identity that speaks of both Xiao Shan and Wycombe abbey.

Client
Wycombe Abbey

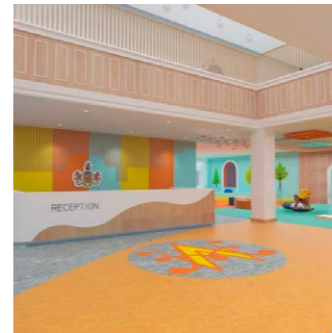
Size
63,000 m²

Inspiration
English Country Park

Services
Masterplanning, Architecture, Landscape, Interior Design

Page 22

Hangzhou Willington School Reformation, China



Using the design of Wellington College in the UK as an initial source of inspiration, we created an interior style reminiscent of the 19th Century school, but with a contemporary edge to reflect a more urban approach.

The design is underpinned by a soft, natural colour palette using warm white and ash, beech and oak wood tones.

Interiors designed include a new main entrance lobby, with a large atrium to create light and space, the V&A café, and various lobby and lounge areas for the kindergarten, primary and boarding schools.

Where possible, walls are minimised within the design to help visually connect spaces and optimise the flow of people throughout the building.

Client
Willington School

Size
1,000 m²

Inspiration
British Willington School

Services
Interior, Landscape Design

Page 26

Nanwai Kings Campus, China



Situated in the centre of Taihu New City, Dipont Wuxi combines four schools – two international and two Chinese national – into one campus. The design approach was to create an English-park masterplan with red brick buildings framing a series of courtyards and sports facilities. Each school has its own courtyard while there are also shared spaces and facilities to encourage interaction between international and Chinese students.

A focus on materiality, scale and proportion defines the scheme which draws reference to the red-brick neo-gothic architecture of many British schools and colleges in a contemporary way. The school offers programmes from kindergarten to year 13 as well as boarding for 960 students.

Client
Dipont

Size
75,000 m²

Inspiration
English Country Park

Services
Masterplanning, Architecture, Landscape Architecture, Interior Design

Page 28

Future Science and Technology City International Education Campus, China



After an international design competition, Broadway Malyan was commissioned by a partnership between King's College School in Wimbledon, Shanghai-based education provider Dipont and the Yuhang Construction Bureau to design Dipont's second combined bilingual and international school campus in China. The campus is designed with current western pedagogy in mind while working within the confines of the local code.

The architecture is identifiable as an extension of the King's College School's identity and ideology while also being inspired by the local context to create a unique school fit for both international and Chinese learners as well as the local community. The buildings are curvilinear in form, inspired by the tea-terraces of the surrounding hills.

Client
Yuhang Education Asset Management Center

Size
117,000 m²

Inspiration
Local topography

Services
Masterplanning, Architecture, Landscape Architecture, Interior Design

Page 30

Overseas Chinese Academy Suzhou, China



Suzhou Returness Children is an international school for local overseas returnees' children and international students. Situated in the Suzhou Industrial Park in the historic city of Suzhou the school benefits from a beautiful natural setting close to Jinji Lake. The school provides a full educational programme with an emphasis on art, culture and sports as well as boarding facilities from Kindergarten through to grade 12.

The brief called for 21st century educational spaces designed to provide the unique spiritual ethos of an international school while reflecting the unique cultural heritage of Suzhou.

Designed using traditional Chinese masterplanning concepts, a hierarchy of paths connects public spaces and divides the buildings into three functional areas moving from West to East. The individual buildings are designed to be simple and rational with smooth circulation routes. High quality public realm accommodates outdoor teaching spaces in addition to extensive sports facilities and play areas.

Client
Chiwayland Group

Size
40+ Schools

Inspiration
Traditional Chinese planning

Services
Masterplanning, Architecture, Landscape Architecture, Interior Design

Academy of ASTEM, China



The brief for the Academy of ASTEM project was to capture the interactivity and sense of wonder common to museums.

The project involved the refurbishment of a private members club in Shanghai's Songjiang District. Comprising four floors, there are ten classrooms, teaching Grades 1, 2, 3, and a number of activity zones resembling museum galleries. These zones are themed in a variety of ways, including an observatory, time tunnel, garden area, city square, beach, cinema and aquarium, which utilises an existing indoor swimming pool.

There are also four spaces inspired by important Chinese inventions; paper, the printing press, gunpowder, and the compass.

Other facilities include a nursery, library and lab. The top floor provides office, meeting space and a staffroom for the teachers.

A double height lobby welcomes visitors and students to the school and a spiral staircase forms the main centrepiece.

Client
China Future Education Group

Size
334,450 m²

Inspiration
Museum galleries

Services
Interior design, space planning

Stoke-on-Trent 6th Form College, UK



Part of Stoke-on-Trent's new university quarter, the award winning Sixth Form College provides a dynamic learning environment, capturing the imagination of the students and staff alike and promoting interactive learning.

The college acts as a gateway to the university district, conveniently located next to Stoke on Trent railway station, the building is based around two multi-storey "streets" which pass through the entire building. These link the inside and outside, creating a variety of environments to facilitate the students' individual learning needs and to establish a shared vision of an integrated learning community.

The larger, more social street has suspended crystalline learning pods suspended within it. Brightly coloured, these pods contain innovative study spaces such as libraries and dance spaces, creating a dramatic and exciting circulation space. Design features include a living bamboo wall which runs from the external landscape into the building, providing a serene, peaceful and calm atmosphere within a small and intimate atrium.

Size
10,000m² GLA

Inspiration
Natural Landscape

Services
Architecture, Interior Design, Landscape Architecture, Town Planning

Awards
Building of the Year at the North Staffordshire Urban Vision, Architecture and Urban Design Awards

Nexus International School, Singapore



Broadway Malyan won the commission to design a landmark International School in the heart of Singapore for one of Asia's largest education organisations. The Nexus International School campus is the flagship school for the Nexus brand and is designed to provide the template for the school of the future.

Facilities at the student campus include a 50m indoor swimming pool, a sports field, recording studios, a library, an auditorium, two sports halls as well as a raft of flexible learning spaces. At the heart of the campus is the Innovation Hub, a showcase space dedicated to the development of new pedagogic ideas.

Designed as an Apple Distinguished School technology is an integral part of the curriculum delivery and a primary driver in the design of the school infrastructure with the latest technology integrated throughout.

A range of initiatives work towards a design ambition of 'zero waste, zero water, zero energy' with technologies that see the pool heated through waste heat from learning spaces, smart shading operated by sunlight sensors and rainwater management enhanced to deal with local climatic conditions.

"At Nexus we believe in evidence based pedagogy which centres learning around the student. Our experienced staff personalise and tailor their lessons to each individual to ensure their particular learning levels are met. Teaching in this collaborative and interactive way requires a unique space that reflects this."

BK Gan, President, Taylor's Schools

Client
Taylor's Education Group

Size
60,600m²
2,000 pupils

Inspiration
A 'vertical campus' referencing the flowing movement of cars

Services
Planning, Architecture, Landscape Architecture, Interior Design

University of Leeds Law School, UK



The Liberty Building at the University of Leeds Law School is a state of the art working and learning facility. Previously housed in scattered and outdated accommodation, the School of Law now enjoys a cohesive environment formed of a series of light filled spaces for students and researchers to interact, collaborate and relax.

A number of different spaces have been designed, from the more protected teaching environments to the north, moving through to the transparency of the open spaces to the south. At ground floor the undergraduate common room occupies the outward facing spaces, where students and staff can mix and be seen as they move around the building.

Client
University of Leeds

Size
6,300m²

Inspiration
Transparency as a link to outdoor areas

Services
Masterplanning, Architecture, Landscape Architecture

Dulwich College Puxi, China



The new Dulwich International School in Minhang, Shanghai provides state-of-the-art teaching and learning environments for early years, juniors and seniors, including a 560 seat professional theatre and an indoor sports hall with a 50m swimming pool.

The concept was to create a modern interpretation of the original Dulwich College, in London. With this in mind, the scheme incorporates elements such as a clocktower and appropriately proportioned red brick facades, which are synonymous with British schools and universities designed in the late 19th and early 20th centuries. A traditional Chinese bridge leads students and visitors across the river to a landscaped entrance square, overlooked by a large feature window made from reclaimed Chinese bricks which again references the original school.

The masterplan wraps the buildings around a grand quad featuring a multi-use turf sports pitches and a cricket oval.

"The buildings have been designed to provide a modern take on the cloistered courtyard, offering a range of secure outside teaching, learning and playground areas for students to enjoy."

Harry Hoodless, Director, Broadway Malyan

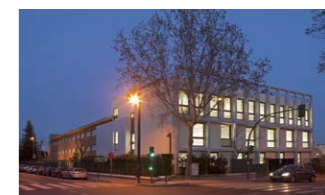
Client
University of Leeds

Size
39,191m²

Inspiration
19th Century British Schools

Services
Architecture, Masterplanning, Landscape Architecture, Interior Design

British Council School, Spain



The major extension, re-modelling and refurbishment of the prestigious British Council School in Madrid, Spain has created a new secondary school wing including 12 flexible teaching rooms, science rooms, art studios and a drama workshop.

New resource areas and an undercroft sports area have also been provided for the 2,000 children who attend, ranging from three to eighteen years of age. The administration and library facilities have been refurbished, along with a reconfigured entrance to the secondary school.

The design team also used thermal mass, extensive shading devices and solar harvesting to ensure teaching environments are economically optimised all year round.

Client
The British Council

Size
1,250 m²

Inspiration
Sustainable development

Services
Architecture, Interior Design

The John Guy Building, UK



Following a design competition, Broadway Malyan was appointed by the Sixth Form College, Farnborough to design a "sustainable and iconic" faculty building at the heart of the

existing campus. The new faculty accommodates physics, electronics, computing, general teaching, photography, art and design.

Central to the design of the building was the creation of areas for students to work in groups and to socialise between classes. A wide central circulation space was designed to facilitate open learning, exhibitions and a cross pollination of ideas while giving access to all.

By studying daylight, ventilation and the existing facilities with the users, a layout for the building was developed which has created flexible and inspiring teaching spaces. A simple palette of sustainable materials, which were responsibly sourced in accordance with the BRE Green Guide, were selected to form an external contemporary white box.

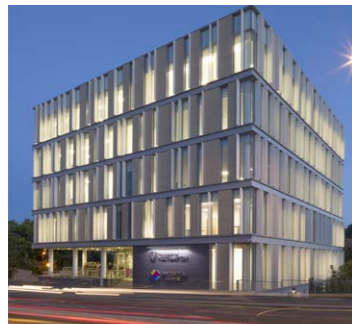
Client
The Sixth Form College
Farnborough

Size
3,050 m²

Inspiration
A central, common core for cross pollination of ideas

Services
Architecture, Landscape
Architecture, Interior Design

Page 49
**Northampton
Innovation Centre, UK**



The Northampton Innovation Centre is a gateway building situated close to Northampton station and forming the first component of the Northampton Waterside Enterprise Zone. As such it was important to create an instantly recognisable landmark that would connect the new Enterprise Zone to the station and set the standard for later phases of the development.

The building takes the form of a simple four storey cube, elegantly clad in

Northampton iron stone and terracotta. As a multi-tenanted office building, it contains 42 flexible office units, with an emphasis on social enterprise and companies formed as a direct result of research and development at the University. Internally the offices are arranged around a central atrium, encouraging interaction between tenants.

At ground level a publically accessible café as well as display and events spaces open on to the street, bringing new-life to this long-neglected part of the town.

Client
West Northampton Development

Size
3,737m²

Inspiration
Simple, regular spaces to encourage interaction

Services
Masterplanning, Architecture

Page 50
**Sir John Deane's
College, UK**



Sir John Deane's College is an extremely successful and popular sixth form college occupying a large site on the outskirts of Northwich town centre in Cheshire. The existing college comprised a mixture of different buildings including an early 20th Century grammar school, 1980s teaching blocks and a number of semi-permanent mobile classrooms.

After being appointed through a limited design competition, Broadway Malyan's initial brief was to rationalise this accommodation, demolishing some of the outdated buildings and incorporating new teaching facilities. The brief was subsequently expanded by the regional LSC to look at the complete redevelopment of the site to provide sustainable 21st Century teaching accommodation.

The project achieved BREEAM "very good" and a 15% reduction on standard CO2 emissions was calculated at detailed design stage.

Client
Sir John Deane's College

Size
10,000m²

Inspiration
A sustainable college campus

Services
Architecture

Page 52
**Qatar Prototype
Schools Programme,
Qatar**



In order to meet the aspirations of the Qatar National Vision 2030, the Supreme Education Council and the Public Works Authority appointed Broadway Malyan to design and develop their next generation of kindergartens and secondary schools. The designs will set the standards of school designs in the State of Qatar for years to come.

Over forty sites have been identified across the city of Doha and beyond and the prototypes are being developed to be flexible enough to accommodate primary, preparatory and secondary school design options. These sites will be transformed over the course of just five years.

All sites have dedicated basement parking, high-quality academic facilities, world class sporting facilities and a step change in functionality and student environment. The projects will support the development of a world class educational system that equips Qatari citizens to achieve their aspirations and meet the needs of Qatar's burgeoning society.

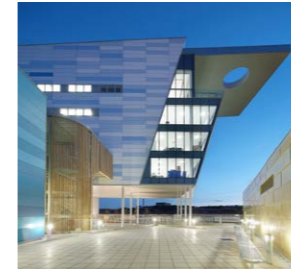
Client
Ashghal

Size
40+ schools

Inspiration
Sea shells and fishing baskets

Services
Architecture, Landscape
Architecture

Page 54
Bournville College, UK



When the Longbridge car plant closed after over a century of production, the site became an ideal opportunity for regeneration within the south west of Birmingham.

Bournville College appointed Broadway Malyan's specialist Education team to prepare a critical part of a new masterplan for a new-build campus building, which facilitates further education, higher education and vocational teaching, located in a new public square dubbed "a new heart for Longbridge". We worked closely with the masterplanner, Bournville College and Birmingham City Council, to ensure the building maximised its potential as an architecturally prominent, landmark building, not only for the college but also for the city. The college required a building for the 21st Century, meaning flexible, adaptable teaching spaces with wireless networks throughout.

"Broadway Malyan designed a fantastic campus for us... it will be one of the most modern and contemporary further education facilities in Europe and will bring long-lasting benefits to the region."

*Norman Cave, Principal,
Bournville College*

Size
23,600m²

Inspiration
Next-generation education spaces

Services
Architecture, Landscape
Architecture, Interior Design

Awards
Education Building of the Year at the Institute of Structural Engineer's Awards 2012, Design & Innovation and Regeneration at RICS West Midlands Awards 2012(Shortlisted), RIBA West Midlands Awards 2012 (Shortlisted),

Page 58
**Cowley Barracks
Student Village, UK**



Broadway Malyan was commissioned to create a major new student accommodation facility on the site of a former army barracks in Oxford. The halls of residence for students at Oxford Brookes University will be operated by Unite Students and is the largest single student development in the city.

As well as nearly 900 student beds, the development will also include a range of collaboration spaces, a shop, laundrette and café, all arranged around two quads and a central parade. The development includes a range of building typologies organised in a series of quads in reference to the architectural enclosures found in many of Oxbridge's medieval colleges as well the site's military history.

A series of three-storey clusters around the perimeter of the site will be constructed in red brick to reflect the local vernacular while the quads will be formed by four and five storey clusters in a buff brick that links the development to a remaining barrack building next to the development site.

A 'Keep' building again references the site's former military use and will form a significant landmark on the prominent corner of the site. The building will be clad in stone with horizontal planks while a rooftop terrace will offer unobstructed views back across the famous spires of Oxford.

Client
Unite Students

Size
885 Beds

Inspiration
The site's vernacular and military history

Services
Architecture, Masterplanning

Awards
Education Building of the Year at the Institute of Structural Engineer's Awards 2012, Design & Innovation and Regeneration at RICS West Midlands Awards 2012(Shortlisted), RIBA West Midlands Awards 2012 (Shortlisted),

Page 61
Kirklees College, UK



The £74 m Kirklees College campus provides an inspirational learning environment for thousands of students in Huddersfield. This ambitious scheme offers nine floors of classrooms and workshops, a gym, training restaurants, hair and beauty salons, a mock aircraft cabin simulator and student services.

The new campus centralises all of its previously disparate accommodation into one central location in a series of three linked blocks.

Acting as a major catalyst for the redevelopment of the town, the college campus effectively links the Waterfront Quarter with the town centre via a pedestrian 'street' which runs through the heart of the college.

"The new college centre will provide the community with an excellent new resource."

Chris Sadler, Principal, Kirklees College

Size
28,380m² GLA

Inspiration
Three distinct, iconic blocks

Services
Architecture, Landscape
Architecture

Coventry University, UK



Coventry University appointed Broadway Malyan to help develop and deliver exciting new state-of-the-art facilities for its Health and Life Sciences Faculty around a major new building.

This has been designed 'from the inside out', driven by the needs of its users and how collaboration between spaces can be maximised.

Prominently located to the south of the city centre, it provides a strong and contemporary landmark that acts as a signpost to the University's aspirations and ambition.

The building's elevational treatment responds to contextual narratives within a single holistic design. The material palette has been kept to a minimum, where handmade brick contrasts with strong exposed concrete blades on the north and south elevations and anodized dark grey window frames and louvres that inform the fenestration throughout.

Client
Coventry University

Size
11,500m²

Inspiration
Collaborative spaces and flexibility

Services
Architecture, Interior Design

University of Leeds Archive Building, UK



Bringing together the aspirations of the University of Leeds and Marks & Spencer, Broadway Malyan designed a functional yet distinctive archive building of the highest design quality.

Alongside a permanent exhibition space, some 18,500 m² of mobile shelving for valuable books and magazines has been provided, plus a 'strong room' which provides environmentally controlled storage for historical photographs, films, unique textiles and historical papers. A conference suite, reading room and offices also feature.

The award-winning design demonstrates innovation in materials selection as well as a strong creative concept where the exterior of the building resembles the pages of a book falling open.

"Students are increasingly discerning about what is on offer – they expect world-class teaching, research facilities and libraries."

Neil Rose, Director, Broadway Malyan

Client
Coventry University

Size
11,500m²

Inspiration
Collaborative spaces and flexibility

Services
Architecture, Interior Design

Awards
Built Environment and Architectural Heritage at the Green Apple Awards 2012 (Silver winner), Design & Innovation at the RICS Pro-Yorkshire Awards 2012 (Shortlisted)

UNNC Innovation Incubator, China



The UNNC Innovation Incubator will set a new benchmark for infrastructure of this type in China, providing a valuable asset to the campus. The design is focused on flexibility and collaborative space, with high specification spaces dedicated to research, business and technology.

The new building will also include live/work spaces and complementary uses such as a restaurant, café, bar, gym, roof garden and social areas.

The site is located between a main road and a canal. The simple, elegant design of the building follows the curve of these landmarks and significant public realm will integrate the building with the wider area and bring people together.

The project is being delivered as part of University of Nottingham Ningbo, China's wider strategic 2020 vision for the development of the campus.

"The UNNC Innovation Incubator will set a new benchmark for infrastructure of this type in China."

Harry Hoodless, Director, Broadway Malyan

Client
The University of Nottingham Ningbo China

Size
15,000 m²

Inspiration
A blend of contemporary office and living space

Services
Architecture, Interior Design, Landscape Architecture

Awards
Built Environment and Architectural Heritage at the Green Apple Awards 2012 (Silver winner), Design & Innovation at the RICS Pro-Yorkshire Awards 2012 (Shortlisted)

Loughborough University, UK



Broadway Malyan was appointed by Loughborough University to provide architectural services for a new building combining England's first National Centre for Sport and Exercise Medicine (NCSEM), and a second space for the University's Health Exercise and Biosciences (HEBS) faculty. The project forms a key part of London's Olympic legacy.

The building provides leading facilities for sports medicine and research and provides medical services for people suffering from sports injuries. It was designed to promote the interaction and exchange of ideas between professional clinicians and academic researchers with the aim of translating research into practice promoting healthier lifestyles.

The NCSEM features an innovative Gait Lab / Biomechanical Analysis Area, where participants / patients are assessed by motion capture cameras and intelligent computer programmes. In addition the building houses a full diagnostic suite provided from the Olympic 2012 site in Stratford.

The building is designed to exploit views across the neighbouring sports pitches and includes a generous entrance colonnade facing the public realm. It achieved a BREEAM Excellent rating.

Client
Loughborough University

Size
6,194m²

Inspiration
An interaction hub for professionals

Services
Architecture

ECNU Affiliated Bilingual School Jiading



Broadway Malyan was appointed to design a new private school located in Anting New Town situated in Jiading, Shanghai. The school offers the Chinese national curriculum within international standard facilities. Set on a tight site and working within strict plot density constraints, the solution emerged through intensive workshops and collaboration. The school takes the form of a series of elongated and fluid buildings with linear fenestration, creating a dynamic vision appropriate for the automotive district in which it is set.

The scheme provides an excellent social and academic environment for primary school levels 1-5 and junior-high school levels 6-9 with a 650-bed boarding house and a 680 seats auditorium. A sports hall contains a 25m pool, a two-court basketball hall and associated dance and gym spaces.

Client
Shanghai International Automobile City Group Co Ltd

Size
43,400m²

Inspiration
The dynamic flow of cars

Services
Masterplanning, Architecture, Landscape Architecture, Interior Design

Creating places. Together.

项目位置

项目位置	直布罗陀	菲律宾
阿尔巴尼亚	中国香港	波兰
安哥拉	印度	葡萄牙
阿根廷	印度尼西亚	卡塔尔
亚美尼亚	伊拉克	罗马尼亚
澳大利亚	意大利	俄罗斯
阿塞拜疆	肯尼亚	沙特阿拉伯
巴林	朝鲜共和国	新加坡
孟加拉国	利比亚	西班牙
巴西	马来西亚	坦桑尼亚
加拿大	马耳他	泰国
佛得角	毛里求斯	突尼斯共和国
智利	摩纳哥	土耳其
中国	摩洛哥	乌克兰
哥伦比亚	莫桑比克	阿拉伯联合酋长国
丹麦	荷兰	英国
埃及	尼日利亚	美国
法国	阿曼	越南
德国	巴拉圭	
加纳	秘鲁	



全球实践



工作室

阿布扎比
伯明翰
迪拜
里斯本

利物浦
伦敦
马德里
曼彻斯特

孟买
阅读
圣迭戈
圣保罗

上海
新加坡
华沙
威布里奇



联系方式

英国

Neil Rose

电话 +44 7710 407 226

n.rose@broadwaymalyan.com

亚太地区

Harry Hoodless

电话 +86 150 2111 2721

h.hoodless@broadwaymalyan.com

欧洲、中东和非洲

Nick Davies

电话 +971 50 811 9721

n.davies@broadwaymalyan.com

美洲

Vitor Pais

电话 +351 91 345 37 18

v.pais@broadwaymalyan.com

www.broadwaymalyan.com

了解我司最新信息，
请关注微信公众号：

